



Michael's Place

let the healing begin

2020/2021 ANNUAL REPORT

CELEBRATING 20 YEARS OF RESTORING HOPE



Table of Contents

- Message from the Executive Director/CEO 01
- A Look Back at 20 Years 02
- Q&A with Michael’s Place Founder & Executive Director 04
- 20 Years in Review 06
- 2020/2021: Michael’s Place Today 08
- Our Mission 08
- Programs & Services 10
- Your Impact 12
- Robin’s Nest 13
- Schools 14
- Business and Community 14
- Financials 15
- Campaigns 16
- With Gratitude 18



Michael’s Place gives my daughter and I an opportunity to share our experiences with grief and loss, with people who truly understand. It can be maddening sometimes to be surrounded by people who don’t understand your incredible loss and the feelings associated with it. In a world that wants you to “hurry up and get over it,” I feel Michael’s Place provides a safe place to work through the stages of grief while giving a camaraderie which is priceless!

Angela M., Attendee

From the Executive Director / CEO



Dear Friends,

It is with great privilege that we present the ***Michael's Place Annual Report: 20th Anniversary Commemorative Edition***, representing our fiscal year of July 1, 2020, to June 30, 2021.

As Chris Dennos and I were setting our organizational goals back in 2001, neither of us could imagine all of the faces that would become part of our greater Michael's Place family or the growth that would take place. Although much has changed in 20 years, our mission-focus of providing innovative and compassionate, no-cost support programs and services for bereaved children and adults has remained the same.

Understanding the changing needs of the bereaved with the increased isolation and loneliness of the pandemic, the 2020-21 year required considerable program re-development. Some achievements include facilitating 13 ongoing in-school support groups reaching underserved students throughout the 5-county region, providing monthly Robin's Nest events for our grieving children and families, redefining our support group programs and services, and returning to in-person support groups.

As a special highlight, Michael's Place was honored with an Impact 100 grant of \$105,333. The transformational funding allows us to build a highly trained volunteer team who will meet the growing bereavement needs of our region and affect healthy healing.

Twenty years represents a significant organizational life, and yet we know that we have much to accomplish to impact continued healthy healing in our regional community. Thank you to all who have supported us during these last 20 years as we set our sights on the next 20+ years.

With much appreciation,

Mindy Buell





A Look Back at 20 Years

*Anyone who comes to Michael's Place
remains part of the Michael's Place family,
no matter how much time has passed.*

Mindy Buell, Executive Director/CEO



A Look Back at 20 Years

IT BEGAN WITH MICHAEL

Providing a safe place for grieving families to heal and express individual stories is the core mission of Michael's Place and the realization of a lifelong goal of Chris Dennos. In 2001, Chris founded Michael's Place – in memory of her young cousin, Michael Dendrinis – with the help of a handful of committed board members and first staff member, Mindy Buell. YOUR giving has assured that Michael's Place could expand beyond one core program of weekly support services. Today, Michael's Place provides innovative, comprehensive grief care meeting the needs of thousands in our community each year.



A Look Back at 20 Years

Q&A WITH FOUNDER, CHRIS DENNOS, AND EXECUTIVE DIRECTOR, MINDY BUELL



Chris, what was the driving force behind the founding of Michael's Place?

When I decided to move to Traverse City I knew I wanted to create something for this community as a contributor and not as the daughter of my parents. They were so philanthropic and it was important to me to follow their lead. My ulterior motive was very personal. Starting a grieving center was my way of caring for children and families who needed a supportive community to heal.

Mindy, the average length of time for a nonprofit executive director is six years. Being a leader at Michael's Place for 20 years must have come with many challenges. What has kept you dedicated to the mission and inspired you to continue in your role as executive director?

The strength and beauty of the human spirit in the face of overwhelming suffering is something I have had the privilege of witnessing every day. Chris Dennos founded Michael's Place with a mission of healing. She remained as our board president for the first 17 years and continues to be our greatest advocate as a trustee. We have an incredible board that is passionate about our mission and smart about our vision. The commitment of our volunteers to provide no-cost grief support is immeasurable. The staff continues to amaze me each day with each person's dedication, care, and ability.

What would you say that you consider the most important aspect of what you have been able to achieve over the years?

Chris: When I hear the stories of people we have helped, I get chills. After many years, Michael's Place is well known and our community understands and trusts us when they are most vulnerable. In the early years, people would shy away from discussing Michael's Place. Over the years, the discussion has become less frightening and that is due to 20 years of focusing on our mission of creating a more compassionate community.

A Look Back at 20 Years



Mindy: The last 20 years has focused on listening and being present to each person who turns to Michael's Place. One of the greatest achievements was the expansion of our grief support to schools and workplaces. In 2007, we helped guide a school district through the tragic deaths of four high school students in three weeks. We have expanded our efforts and today, our services include grief education to teachers, training for school grief crisis teams, and aftercare services to schools and workplaces.



What have you learned?

Chris: I have learned the importance of working as a team, being flexible and transparent. Michael's Place is a family of collaborators, from the staff, the board, volunteers and families, we are all devoted to bringing hope back to those who have lost loved ones. Being flexible has allowed us to grow and improve all along the way. We have never seen roadblocks that stopped us, slowed us possibly, but not stopped.

Mindy: So often, we focus on mistakes and imperfections. I have realized that things go very well, or not at all as planned. All these lessons are valuable and continue to expand my knowledge and understanding. Many challenges have led to great lessons learned over the last 20 years at Michael's Place.

What is your vision for the future of Michael's Place?

Chris: Michael's Place has far exceeded my vision. Twenty years ago, we started hoping to help as many as possible with our group support. I had no idea of the work we would do in schools and businesses. Today my vision is to be recognized nationally for our unique programs and training opportunities.

Mindy: Michael's Place has only begun its journey of impacting our regional community with grief support. I look forward to Michael's Place being a household name, not because people need our grief support, but because people know they can turn to us for education, training, and care in support of those in their lives who need us.

20 Years in Review: Together, We Grow

2001

Michael's Place was founded and began with one staff and one family support group program.

2007

The need for school support services was emphasized following the deaths of four students in one school district.

2008

Received a Rotary Charities grant to hire a Clinical Program Director and begin **School-Based Initiative** to meet growing demands.

2009

First grief support request from community business leads to **Compassionate Workplace Initiative**.

2010

Robin's Nest 'Best Day' program for children and families was launched.

First **A Night at the Movies** fundraising event.

2011

Inaugural **Restoring Hope Breakfast** fundraising event raised \$400,000 in gifts and pledges.

2012

Recipient of Grand Traverse Band 2% grant allocation, beginning a strong partnership with TBAISD and GTB.

Received first New York Life Foundation grant to support continued work in the schools.



Michael Dendrinis,
for whom Michael's Place
is named. b. 1957- d. 1971





2015

Michael's Place Executive Director, Mindy Buell recognized in ***Powerful Women Series***.

Michael's Place locates at 1212 Veterans Drive. Dedicated space for children's support groups was created thanks to ***The Les and Anne Biederman Foundation, Help in Heels, and Dan Brady Painting Company***.

2016

School Grief Crisis Plan template copyrighted.

Selected as ***Hagerty Nonprofit Partner of the Year***, assisted through employee service, pro bono consulting, and a \$25,000 financial investment.

2018

Michael's Place was one of six bereavement centers selected to partner with national nonprofit ***StoryCorps*** to record stories for their ***Road to Resilience Project***.



2019

Mindy Buell presented ***Grief and Resilience: Notes from the Field*** at TEDx - Traverse City.

Founder, Chris Dennos, recognized as ***7 over 70*** in the Traverse City Business News feature ***Not Slowing Down: Seven Remarkable Septuagenarians Still Making Their Mark On The Region***.

Rotary Charities grant received to increase capacity and develop revenue-generating program.

2020

COVID required significant adaptation in 2020/2021, including:

- Transition from in-person grief support to remote and hybrid models adapting safety protocols while meeting the needs of the bereaved throughout the community.
- Moved from traditional in-person fundraising events to two virtual campaigns to support operating needs.

A young girl with blonde hair, wearing a black riding helmet and a pink t-shirt with a circular logo that says "FINE ARTS CAMP", is smiling while riding a light brown horse. The horse is facing right. The background shows a clear blue sky, some green trees, and a white fence. A person in a green shirt is partially visible on the right side of the frame.

Michael's Place Today.

Together, We Thrive.

Michael's Place provides support and advocacy to children, teens, and adults grieving the death of a loved one and serves the bereavement needs of the community.

Michael's Place Today



BOARD OF DIRECTORS

Karen Browne, *President*
Dan Brady, *Vice President*
Chris Dennos, *Founder, Trustee*
Doug Morgenstern, *Treasurer*
Gretchen Overbeek, *Secretary*
Marika BeVier, *Trustee*
Mindy Buell, *Trustee*
Judy Harrison, *Trustee*
Leslie Heimburger, *Trustee*

STAFF

Mindy Buell,
Executive Director/CEO

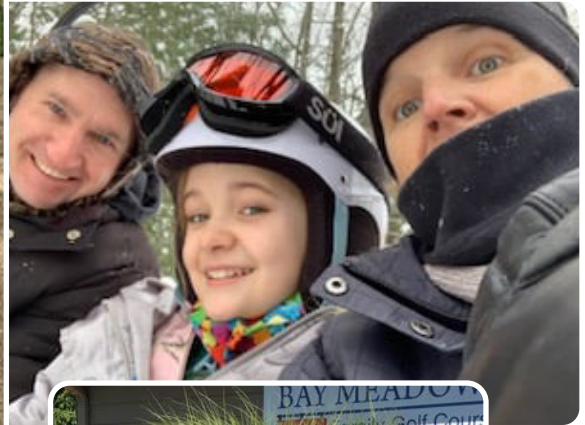
Elizabeth Boomer-Judson,
Community Services Coordinator

Breanna Broering,
Grief Services Coordinator

Pam Jones-Robinson,
Marketing & Volunteer Coordinator

Kristi Spencer-Nemec,
Grief Services Coordinator

Connie Wintzinger,
Development Director



Michael's Place Today

PROGRAMS & SERVICES

Michael's Place provides grief support programs and services that are designed to ease the impact of loss. We believe that the creation of a safe environment promotes healthy healing for children, families, and individuals and builds resiliency and a compassionate, connected community.

GRIEF SUPPORT FOR ALL AGES:

Peer-facilitated Support Groups

Support groups are facilitated by trained volunteer facilitators and staff who provide guidance along with peer-to-peer support. Youth meet in age appropriate groups and participate in grief-related activities and discussions. Adults meet with others who have a greater understanding of their grief journey.

Robin's Nest

With the help of mentors, the Robin's Nest program provides best day activities and educational opportunities designed to help grieving children and their families feel normal, bring joy to their lives, and create new memories.

Workshops and Support Opportunities

Create-A-Keepsake | GriefShare | Healing Garden | StoryCorps Inspired Sessions | Educational Workshops and Presentations





COMMUNITY SUPPORT SERVICES:

School-Based Initiative

Michael's Place provides support and guidance to the community through:

- In-school support groups to elementary, middle, and high school students grieving the death of a loved one.
- Guidance and training to schools to develop grief crisis plans, assistance following the death of a school community member, and ongoing grief education.

Compassionate Workplace

Michael's Place provides support and guidance to businesses and community organizations in the midst of a bereavement crisis and to professionals that work in high-loss environments.

Community Education

In addition to the customized training available to schools, businesses, and health care professionals, Michael's Place offers education and presentations to community groups and organizations on grief-related topics.

I attended the Youth Summit on Suicide's "Grieving a Death to Suicide" session led by Kristi Spencer-Nemec from Michael's Place. It was very informative because I lost my mother six years ago and still feel as though if I had not had surgery that day there might have been something I could have done. I am going to seek out help to resolve these issues of grief, which I have not fully addressed.

Educator & Summit Attendee

Your Impact: Programs and Services

Michael's Place is the only bereavement center in northern Michigan providing no-cost grief support programs to children, teens, adults, and the community.

2020-2021: BY THE NUMBERS

1,976

Children, Adults,
and Community
Members Served

10

Counties
Served

229

Grief Support
Programs Provided



There are no words that can express the gratitude for the amazing staff and wonderful programs at Michael's Place. They are a blessing and an invaluable resource to all the families that they support.

Laura M., Attendee

Your Impact: Robin's Nest Best Day Events for Grieving Children

378



Youth and their families participated in Robin's Nest 'Best Day' opportunities.

Thank You to Our Host Sites and Event Sponsors:

Seung-Ni Martial Arts Class

A Day @ Reining Liberty Ranch

Theatre Camp @ Parallel45

Bike Camp @ Norte

Dinner and Dessert Provided by Jimmy John's and Grand Traverse Pie

Drive Thru Meal Provided by North Bay Produce and GTACS

Fall Fun @ Jacob's Corn Maze

Tubing @ Timberlee

Skiing & Snowboarding @ The Homestead

Ice Skating @ Centre Ice

Bowling & Laser Tag @ Incredible Mo's

Thank you so much to all the businesses that have supported our families through this difficult past year with COVID. They stepped in and allowed our families to experience meaningful and enjoyable time together even though we couldn't gather as a group. This was a true community gift and brought smiles to many children, as they allowed us to offer activities every month.

Elizabeth Boomer-Judson, Community Services Coordinator

Your Impact: Schools and Workplaces

SCHOOL COMMUNITIES IN 2020/2021 MICHAEL'S PLACE PROVIDED:

41

Students with support in the ongoing in-school grief support program

71

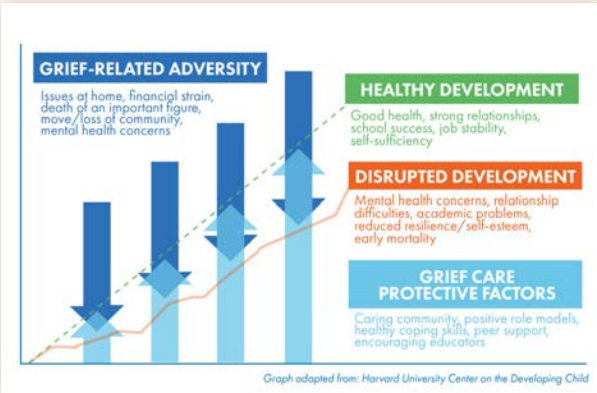
Middle and high school students and faculty with grief education on suicide loss

76

In-school support groups

Childhood Bereavement: The Cost of Inaction

Research shows that bereaved children are at an increased risk of disrupted development. Unaddressed childhood grief and trauma can lead to short-and long-term difficulties including decreased academic performance, mental health issues, and early mortality.



BUSINESSES AND ORGANIZATIONS IN 2020/2021 MICHAEL'S PLACE PROVIDED:

Before the pandemic, grief was estimated to cost employers up to \$75 billion every year in lost productivity. Mental health-related expenses are certain to skyrocket, as at least 1.8 million Americans are estimated to have already lost a relative to COVID-19, and deaths of despair continue to rise nationally and regionally.*

**Data retrieved from the Grief Recovery Institute Educational Foundation and CDC*

44

Individuals in local businesses and organizations with grief support

14

Community presentations

387

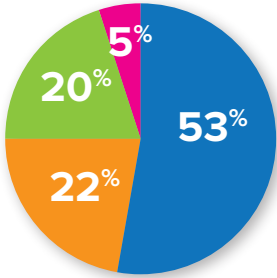
Community members with education on grief and loss



Michael's Place Financial Statements (Cash Basis)

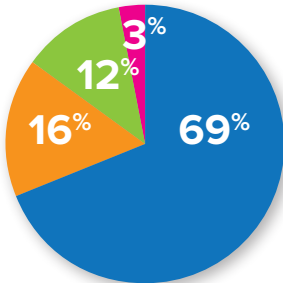
Fiscal Year Ended June 30, 2021

REVENUE



- General Corporate & Individual Contributions
- Bequests
- Program Grants
- Fundraising Events

EXPENDITURES



- Grief Support Services
- Administration
- Facility Rent & Maintenance
- Fundraising & Community Outreach

OPERATING STATEMENT

REVENUE

General Corporate & Individual Contributions	303,379
Bequests	123,710
Program Grants	113,220
Fundraising Events	30,592
Total Revenue	570,901

EXPENDITURES

Grief Support Services	290,001
Administration	64,776
Facility Rent and Maintenance	52,110
Fundraising and Community Outreach	11,317
Total Expenditures	418,204
Operating Surplus or (Deficit)	152,697

BALANCE SHEET

Assets

Checking and Savings Account	326,404
Rental Security Deposit	3,250
Short-term Pledges Receivable	101,000
Pledges Receivable Beyond One Year	257,170
Furnishings & Equipment (net of depreciation)	15,470
Total Assets	703,294

Liabilities and Fund Balances

Accounts Payable	1,685
Payroll Taxes and Benefits Payable	6,281
Restricted Grant Balance	46,247
SBA Loan Payable	0
Unrestricted Net Assets	649,081

Total Liabilities and Fund Balances	703,294
--	----------------

Your Giving / Restoring Hope Campaign

Your volunteerism and generous financial gifts are critical to delivering the Michael's Place mission.

The pandemic demanded a shift from in-person fundraising events to virtual campaigns. Thanks to YOU these efforts proved very successful at a time of increased need. Michael's Place could continue to deliver grief support programs and services at no cost when so many families were faced with deep uncertainty and burdensome isolation.

RESTORING HOPE CAMPAIGN



(Above) Karen with Sara, age four months.
(Right) A bookmark Sara made when she was learning to print. Karen explained that the two words needed to be separated by a space. "But I want to be next to you," Sara said.

\$163,963*

* Total Includes cash donations & pledge gifts

303 donors



For ten years, Michael's Place raised much-needed funds at the community event, the Restoring Hope Breakfast. Our virtual Restoring Hope Campaign featured a powerful video testimonial from Karen Anderson, a mother grieving the death of her daughter Sara at age 46 from cancer. This heartfelt story touched the lives of so many who, in turn, were moved to support the mission of Michael's Place. We are grateful that this virtual campaign reached a compassionate, generous community.

Thank you to Karen for her eloquence and courage. Thank you to our board of directors, who established their own pages and shared the message far and wide. Thank you to those who supported this critical fundraiser that allows Michael's Place to continue to deliver bereavement programs and services to families at no cost, and to schools and workplaces.

Your Giving / 20miles for 20years



Michael's Place kicked off our 20th year celebrating with the 20miles for 20years Virtual Challenge.



We are so grateful to each participant, team, fundraiser, and donor for supporting Michael's Place and this fun virtual event!

\$33,018.35

Special thank you to presenting sponsor **North Bay Produce**, major sponsor **Windemuller Electric**, and each of our generous sponsors for your dedication to the grieving families in our community:

139 donors

Special thank you to these youngest of Michael's Place volunteers who took on the challenge with joy!

- > Auto-Owners Insurance
- > Blue Cross Blue Shield of Michigan
- > Cherryland Electric Cooperative
- > Cintas
- > Coldwell Banker Schmidt - Schmidt Community Fund
- > Consumers Energy
- > Image360
- > Independent Bank
- > Johnson & Associates Insurance
- > Priority Health
- > Smith & Johnson Attorneys, PC
- > Target
- > TBA Credit Union
- > Team Bob's Heating, Cooling, and Plumbing
- > Team One Credit Union
- > Traverse Catholic Federal Credit Union
- > Traverse City Elks Lodge #323
- > Walmart Foundation



With Gratitude To Our 2020-2021 Supporters!

Michael's Place Benefactors - \$50,000 +

Impact 100 Traverse City
Peter and Margaret Dendrinis
Charitable Bequest

Michael's Place Champions - \$25,000 - \$49,999

American Waste Charitable Fund
Bill and Susie Janis*
The Gerstacker Foundation

Michael's Place Patrons - \$10,000 - \$24,999

Anonymous (2)
Chris Denmos*
Grand Traverse Regional
Community Foundation -
Youth Endowment
Rite Aid Foundation KidCents
The Art and Mary Schmuckal
Family Foundation

Michael's Place Advocates - \$5000 - \$9999

Anonymous
Todd and Michelle Broad*
Shane and Lee Ann Bullough*
Constance Deneweth*
Dan Edson*
Cameron and Dawn Fuller*
Wally and Carmen Gonzalez
Grand Traverse Band of Ottawa
and Chippewa Indians
Madelaine Jones*
Jamie and Paula Jo Kemler*
North Bay Produce*
The Les and Anne
Biederman Foundation

Gifts of Hope - \$1000 - \$4999

Advantage Benefits Group
Deborah Anderson
Bill and Suzie Anderson*
Anonymous (4)
Shelly Ashmore
Auto-Owners Insurance
Mike Baker*
Nicolaas and Rhonda Ballintyn
Mario Batali
Kellie Beaton
Beers Family Foundation
Chuck and Barbara Benson*
Blue Cross Blue Shield of MI
Charles and Karen Browne*
Mike and Mindy Buell*
Thomas and Pamela Caldwell
Cherryland Cares Fund
Cherryland Electric Cooperative
Steve and Hallie Christian/
Dinghy's Restaurant*
Consumers Energy
Kenneth and Valarie Dabrowski*
David Denison/La Cuisine Amical*
John and Robin Ehardt*
Rick and Rebecca Ehlers
Facebook Fundraisers
Scott and Luke Fochtman
Jane Fochtman*
Golden-Fowler Home Furnishings
Michael and Angela Goodall*
Barbara Goodearl*
Timothy and Sally Hanley
Mary Beth Hardwicke*
Mary Sue Hautz
David and Leslie Heimburger*
Aaron and Joanna Heindl
Linda Hitchcock*
Immaculate Conception Church
Johnson and Associates
Insurance
Forest D and Marda
Hidgon Jones*
Paula Kelley
Charlie and Kelly King/
Team Bob's
Sara Klinkers
Gerald and Patricia Kolb
Steven and Stacey Lamie*
Bill and Gail Lanphear
Meijer, Inc
Jason and Sarah Mettler
Keith and Kirstin Nielson*
Oleson Foundation/
Director's Choice Fund
Optimist Youth Foundation
Jim and Gretchen Overbeek*
Stephen and Deona Paine
Royce Ragland and
Kenneth Bloem
Eric and Debbie Ritchie
Robert Foundation
Matthew and Adrienne Russell
Paul Schmuckal*
Tom and Ann Schofield
Laurence and Jean Skendzel
Bill and Mary Smith*
Kenneth and Kolean Spigarelli
Russ and Jennifer Spranger

Dennis and Sandra Stockemer*
Bill and Mary Swift*
Bryan and Ashley Taggart*
Target
Jerry and Jennifer Taylor
TBA Credit Union
Kay Telma*
Chris and Donna VanSteenhouse*
Walmart Store #2338
Ray and Micki Weigel*
Wells Fargo Employee
Matching Giving
Windemuller Electric
Barbara Zupin and Tom Gardner*

Gifts of Compassion - \$500 - \$999

American Proficiency Institute
Fred Anderson
Brian Anderson
Anonymous
Ron and Gaye Beebe
Otto and Kathleen Belovich
Arleta Bernson
Bill Marsh Automotive Group
Dan Brady*
Dennis and Shelly Brodeur*
Central United Methodist Church
Bob and Julie Ebel
Debbie Edson
First Presbyterian Church
of Elk Rapids
Robert Flannery
Lawrence and Christine Flynn
Holly Gallagher/
Horizon Financial*
James Goran
Grand Traverse Resort and Spa
Brad and Judy Harrison*
Hayden Foundation
Sam and Terri Hearne
Tom and Cherie Hitchens/
Hitchens Family Foundation
Independent Bank
Peter Jones
Charles and Karen Kaufmann
Kiwans Club of Boyne City
Jennifer and Clint Klabunde/
Northwood Animal Hospital
Russ and Leslie Knopp
Bruce Luoma/
National Vacuum Equipment
Matthew and Jody Madion
Terry Malone
Doug and Jennie Morgenstern*

Kathleen Moyer
Carey Owens*
Angela Petty*
Bridget Popp/R.W. Popp
Excavating, Inc.
Priority Health
ProMedica Hospice
Memorial Fund
Ryan and Christina Ribel
Josh and Deanna Russell/
Jimmy John's of Traverse City
Joel Saper
Mike Schmidt/Schmidt Family
Community Fund
Don and Susan Schmuckal*
Ross and Sherry Schofield/
Marathon Automotive*
Barbara Smith
Mike Stimac
Julia Sturm
Nancy Sweet
Michael and Terry Tarnow
Team One Credit Union
Larry and Sandy Tiefenbach*
Traverse Catholic Federal
Credit Union*
L. Kent and Nancy Walton
Patricia Witse
Christine Zimmer

Gifts of Friendship - \$250 - \$499

Assad and Sandra Al-Shamma
KT Anderson
Randy and Peg Asmus
Dan and Marlene Baldwin*
Adam and Marika BeVier*
Boonedocks, Inc.
Margaret Brace
Mike Brown/BURDCO
BWR of Traverse City
Harvey and Kathryn Calcutt
Steve and Gina Cameron
Cherry Capital Sandwiches II
of South Traverse
Michael Chires
Community Impact Partners
Kenneth and Julie Flannery
Shantel Francis
Nancy Gallagher
Janice Gordon
Kurt Grockau
Melissa Hautz*
Brian and Pam Klumpen
Mary Krantz

Jeff Layman
 Life Story Funeral Home
 Christopher and Kristin Lutz
 Richard Douglas Meteyer
 Branden Morgan and
 Jennifer Buell Morgan*
 Penelope Ort
 Padnos Traverse Bay
 Karen Provins
 Josh and Deanna Russell
 Catherine Schmitt
 Larry and Missy Skendzel
 Smith and Johnson Attorneys
 Frank and Evelyn Tenbusch
 Robert Thomas
 Jeff Tuori
 United Way of
 Northwest Michigan
 Scott and Ruth Walker
 Robin Wybenga*
 Buz and Trish Zamarron
 Andrew Zandler

Gifts of Kindness - Up to \$249

Jennifer and Donald Adkins
 Nancy Ammann
 Andrew Amrhein
 Alan and Pam Anderson
 Karen Anderson
 Michelle Anderson
 Tony and Mary Anderson
 Anderson's Glen Arbor Market
 Diane Ankerman/
 Covell Funeral Home
 Catherine Annelin
 Anonymous (35)
 Liz Atkinson
 Mark and Stacy Aulicino
 Kim Bailey
 Frederick Bailey
 Beth Barnett
 Rob and Linda Bartosiewicz
 Betty Beck
 Alice Beeker
 Allison Beers
 Terry and Shannon Beia
 Jeffrey Bell
 Lynn Bennett
 Lauren Berthelot
 Mary Binder
 Ulrich and Janice Binkert
 Bishop Electric
 Bradley and Terra Boekler
 Steve and Ann Bollinger
 Sarah Bowers
 Bill and Karen Brady
 Marty and Richard Brauer
 Bob and Nancy Brick

Megan Brown
 Heather Bruce
 Sean and Darlene Brunetti
 Brianna Buniewicz
 Molly Buttleman
 Bruce and Mary Byl
 Warren Call
 Paul Canaan and Jacob Yandura
 Caring Circle Services
 Joan Carley
 Susan Carlson
 Carrie Carnacchi
 Cheryl Carnes
 Wayne and Kerry Carnes
 Grant and Terry Carrithers
 Michael and Jessica Caruso
 Michael Casciano/
 Casciano Traverse City, Inc.
 Nan Casey
 Jessica Cavanaugh
 James Chacon
 Carol Chapelle
 Mark and Ruthanna Chellis
 Jon and Diane Chrestensen
 Stewart Chritton
 William and Karin Chung*
 Warren Cline and Della Lewis
 Tim and Mary Clulo
 Vincent and Marianne Cornellier
 Corner Drug
 Nancy Cotcamp
 Stephen and Therese Cousins
 Arthur and Penny Cox
 Mari Crane
 Jerilyn and Nicholas DeBoer/
 Cousin Jenny's Cornish Pasties
 Linda Delemeester
 Kristy Denny
 Pat and Sandy Denny
 Janet Denton
 Amy Devey
 Doug and Maureen DeYoung
 Denine Dingeman
 Christie Dompierre
 Kathy Douglass
 Joseph and Marilyn Dressel
 Judith Drinan and Karen Alpers
 John and Beth Dunckel
 Edwin and Kathleen Dunn
 Olivia DuPont
 Julia Eikey
 Don and Bobbie Elliott
 Philip Ellis
 Kevin and Ann Elsenheimer
 Eyes Only Media
 Ginny Fey
 Deborah Fickert
 Bruce Finlayson*

Brian and Vera Fisher/
 Denture Care Clinic
 Terra Fite
 Steven and Heidi Fite
 Nancy Flanagan
 Nick and Amy Florian
 Forest Area Federal Credit Union
 Eric and Melissa Fournier
 Patrick Friedli
 Angela Friske
 Terry and Linda Frysinger
 Robin Collings Gabor
 Alice Garczynski and
 Peggy Derosie
 Thomas Gartland
 Lynn Geiger
 Jerry and Sharon Glenn
 Teri Gorsline
 Vicki Graczyk
 David and Lisa Green
 Christi Greening
 Andrew and Erica Griffin
 Richard Griffin
 Penny Griffith
 Mark Guimond
 Steven Habegger
 Craig and Laura Hadley
 Lindsey Haines
 Charles Hamlyn
 Sara Harding
 Jessica Harding
 Sondra Hardy
 Jeffrey and Jodi Harrand
 David and Helen Hautz
 James Hautz
 Sara Hautz
 James Hautz, Jr.
 Vickie Hays
 Norman and Suzanne Hefke
 Phil and Cathy Hendges
 Tom Hepner
 Jacquilyn Herman
 Karyn Hertel
 Beth Hines
 Teagen Hoeninghausen
 Julia Hogan
 Rex and Jill Holden
 Mike and Sue Hornby
 Stephen Horne
 Josette Hosking
 Paul and Laura Jacobson
 Deyar Jamil
 Barb Johnson
 Bailey Judson
 Polly Judson
 Just Chillax'n LLC
 Randall Kaastra
 Mike and Marcy Verplanck Kanitz

Annelie Kaspor and
 Joseph Jonika
 Arman Kaviani
 Jon and Susan Keillor
 Richard and Patricia Kelley
 Charles Kelly
 Patrick and Kristine Kernan
 Patrick Kernan
 Melissa Kilbourn
 Jacqueline Kim
 Kenneth Kleinrichert
 Jay Knapp
 Alyssa Knust
 Kenneth and Virginia Knutsen
 Dave and Nan Kober
 Thomas and Kathy Koch
 Barbara Kohn
 Kay Koop
 Walter Kraimer
 Michael and Tracey Kushion
 David and Mary Kushion
 Don and Elena Lackie
 Jamie LaFerriere
 Douglas and Evelyn Laman
 Norman Lee
 Ruth Leonard
 Cait Lewis
 Andrew Light
 Live Local Realty
 Michael Loew
 Frederick and Kathleen Lubig
 Derek and Jill Lucas
 Karen Ludwig
 Laura Macke
 Caroline Malocha
 Dee Malocha
 Kevin Malone
 Kerry and Tim Maloney
 Catherine Maltby
 Jennifer and Andrew Maniaci
 David and Carolyn Mann
 David and Karen Manthei
 Devon and John McArdle
 Keith McCardel
 Sam and Joyce McClellan
 John McElduff
 Becky McLogan
 Julie McNiff
 Stephen and Sally Meach
 Becky Mead
 Dave Mengebier
 Angela Mercado
 Richard and Andrea Spata
 Merrill
 John and Alison Metiva
 Charlotte Miller
 Rich and Cindy Milock
 Marsha Mixer

With Gratitude To Our 2020-2021 Supporters!

Jim and Cindy Monroe
Benjamin Morgenstern
Cecilia Morgenstern
James Morgenstern
Jennifer Morgenstern
Roger Morgenstern
Sharynlyn Morgenstern
Steven Morgenstern
Tom Morgenstern
Christopher Morse
Kathleen Mulcahy
Gary Muller
Ann Murphy
Kimberly Murphy
Ann Murphy
Terry Murphy
Kim Murray
Deeanne Myers
John and Carole Myre
Bob and Alisha Needham
Katherine Neihardt and
Sara Hornick
Lisa Nellis
Emmy Nelson
Tim Nelson and Nancy Johnson
Wes and Arlene Nelson
Gary Nelund
Karen Nemecek
Gayle Neu
Cicily Newby
Kimberly Ng
Jennifer Nickerson
Pam Nickerson
Northern Pines Health Center PC
Joseph and Barbara Novak
Diane Nugent
Tim and Laura Nyquist
Maria Okorn
Sandra O'Neil
Bob and Laura Otwell
Laurie Padgett
Joseph Mark Parsons
Jane Passmore
Margaret Patterson
Abigail Paulson
Dave and Amy Pax
Steve and Lisa Peacock
Henry and Sarah Peet
Glen Petersen
Elizabeth Petrella-McKellar
John Petrovich
Mark and Carrine Pomaranski
Tom and Ann Post
Mark Powers

Mary Lou Ramos
Bill Rastetter and Cary Weed
Hugh and Linda Rea
Jennifer Reeves
Jennifer Richardson
Phil and Joan Richardson
Robert Richardson
Howard and Dianne Richter
Christine Robb
Don Robinson and
Pam Jones-Robinson
Margaret Robinson
Lori Rodes
Carl and Mary Keyes Rogers
Bruce and Joyce Rogers
Mary Rohde
Suzanne Rosinski
Debbie Rough
Gary and Kathy Roush
Karen Sadler/
Michael Sadler Foundation
Jon Sak
Salesforce Employee
Giving Program
Chet Salisbury
Marily and Clint Sampson
Jeff and Kelly Sandman
Lee Sandy
Catherine Schmitt
Robert and Constance Schneider
Laurie Seeber
Charles Sehi
Faye Shaw
Joan Shirilla
Duane Shugart
Stephen and Peg Siciliano
Lynne Siemon
Kurt and Julie Silvis
Shannon Sitek
Kim Skeels
Abby Smith
Amy Smith
Lindsay Smith
Matt and Abby Smith
Lauren Snowday
Anne Solem
Albert Spafford
Steve and Susan Spata
Tony and Loretta Spata
Peter Spata
Ann-Marie Spata
Kristi Spencer-Nemec
Barbara Spinniken
Leo and Linda Stallman

Peggy Stanek
Matthew Stapleton
Rachel Steelman
Ellen Stewart-Miller
Dan Stouidt
Craig and Nicolette Straley
Libby Struick
Bart and Laurie Stupak
David Summers
Theresa Swam
Swogger, Bruce and Millar
Law Firm P.C.
Chris Taft
Alice Tang
Ellyn Tarrant
Megan Taylor
Sherry Taylor-Galbraith
Rebecca Teahen
Holly Tegel
Rita Thompson
Gregory Thompson
Ann Tisdale
Martha Topol and David Kirby
Trattoria Funistrada
Traverse City Elks Lodge 323
Chris and Shauna Treter
Dale and Janet Troppman
Mark and Diane Tudor
Dale and Kim Tumey
Jeff Tuori
Andrew and Jennifer Tursman
Stanley Tylutki
Lori Van Antwerp
Wade VanHouzen
James and Jill VanStratt
Roberta Viegelahn
Hans and Maureen Voss*

Steven and Linda Wade
Nicole Walsh
Christopher and Ashlea Walter
Brian Walter
Kimberly Walter
Bob and Terra Walters
Brent Walton
Paula Ward
Ron and Janeen Wardie
Charles and Glenda Watling
Tim and Cindy Weber
Annette Weisbarth
Tom and Deb Wetherbee
Lynda Wheatley
Branden and Jessica Wheaton
Linda Wheelock
Matthew Wiberg
Brian and Tonya Wildfong
Jerry Wilhelm
Marie Williams
Eileen Williams
Ron Williamson
Lisa Wills
Mark and Jessie Wilson
John and Connie Wintzinger
Larry and Ginny Wolfe
Patricia Woods
Pam Woolcott
John Wunsch and Laura Wiegfield
Blair Yaroch
Linda Young
John and Marylou Zaloudek
Amanda Zehner Carlson
Doug Zernow
Karen Zerenner
Kay Zins



I support Michael's Place because they put individuals on a path towards healing after the loss of a loved one –

Josh Russell, Owner of Jimmy John's

We strive to make our list as accurate and complete as possible; if you find an error or omission, please contact Connie Wintzinger at connie@mymichaelsplace.net or 231.947.6453.



Thank You to Those Who Helped Restore Our Facility After a Flood in 2020:

Cherryland Cares
 Golden-Fowler Home Furnishings
 The Les and Anne Biederman Foundation
 Meijer, Inc.
 Members of Impact 100
 All Those Who Supported our Children's Book Drive

Thank You to Our Volunteers:

Fred Anderson	Carol Brock	Pamela Giles	Kerry Maloney	June Palumbo
Karen Anderson	Karen Browne	Kay Goodall	Brian Marhofer	John Phillips
Sarah Allaben	Susan Buxton	Nancy Guido	Tess Marhofer	Yasmin Richmond
Valerie Atkin	Susan Canright	Judy Harrison	Michele Marshall	Constance Schneider
Daniel Baldwin	Tonja Carlson	Cathy Heidel	Marci Michael	Wendy Shutler
Marika BeVier	Gary Clifton	Leslie Heimbürger	Jill Miklos	Bill Smith
Marty Bieganowski	Samantha Comai	Bailey Judson	Alex Moravec	Meg Staley
Holly Bigger	Chris Dennon	Mike Kebler	Doug Morgenstern	Nancy Sweet
Ann Bollinger	Kristy Denny	Sarah Kebler	Geri Morris	Heidi Szerlong
Jasper Boomer	Mary Dillinger	Kim Koehler	Pat Navyac	Ellyn Tarrant
Oliver Boomer	Kathy Fitch	Ellie Krieg	Kevin Nelson	Mark Wilson
Sawyer Boomer	Robin Flannery	Harry Kroll	Jennifer Nickerson	Pat Woods
Dan Brady	Carolyn Francis	Carole Lannin	Penny Ort	Linda Young
Abbie Broad	Karen Garson	Susan Larned	John Owens	
Michelle Broad	Michele Gentry	Emily Ledford	Gretchen Overbeek	

Michael's Place Is Thankful For Gifts Made In Loving Memory Of:

All Covid Deaths	Richard Deneweth	Karen Hodgman	My Mom	Drew Tintera
Linda Susan	Mike and Barb Dennon	Aaron Hogan	My Parents	Larry Walter
Olger Anderson	Betty Doeblér	Scott Huggins	Mary Ann Myros	Glenda Watling
John Robert Aoun	Nick Falcone	Chuck Judson	Patricia Parsons	Jenette Weber
Mike Ascione	Julie Janis Finch	Leta Kelly	Hunter Peer	Archer Michael
Rick Bailey	Ralph J. Florenski	Cathy Layman	Bethel Purvis	Wheaton
Jean Barnikow	Zachary Fochtman	Ronald Lovisa	Juanita Lynn Renaud	David Williams
"Grandma Cookie"	Aurea Gonzalez	Adam Ludwig	Lisa Marie Rosinski	Christina Wills Klein
Kylee Bonne	Dan Goodearl	Pat Lunn	Stefan Thomas	Emily Wilson
Sara Judith Boven	Joshua Gorney	Zechariah Marsh	Schofield	Beth Winans
Susan Brace	Brad Graczyk	Daniel "Beechie" Miller	Marilyn Skay	Greg Young
Diane Bradbury	Arlene Grockau	Catherine Morgenstern	Margaret Ann Small	
Joseph D Browne	Abby Gross	Parents of Doug and	Susan Stoudt	
Greg Buell	Justin Hansen	Jennie Morgenstern	Bruce and Sheryl Struik	
Alix Crawford	Zach Harder	Matthew Moyer	Christopher Arthur Swift	
Peter and Margaret	Timmy Hautz	Eli Mueller	Treg Szerlong	
"Peggy" Dendrión	Samuel James Hearne	My Dad	Carole Thompson	

Michael's Place is Thankful for Gifts Made in Honor Of:

All Veterans	Mike Buell	Heidi Hedquist	The Boomer Brothers	Bob and Susan Wilkes
Fred Anderson	Mindy Buell	James Hosking	The Family of	David Williams
Dan Brady	Chris Dennon	Kelly Sandman	Mike Ascione	Connie Wintzinger
Dan and Lisa Brady	Healthcare Workers	and Dinghy's	The Judson Family	"Pete"
Brother Paul Bray	John Hearn	Bill Smith	The Tarnow's 50th	
			Wedding Anniversary	



1212 Veterans Drive, Ste. 100
Traverse City, MI 49684

231.947.6453
goodgrief@MyMichaelsPlace.net
MyMichaelsPlace.net

Michael's Place is a family of collaborators, from the staff, the board, volunteers and families, we are all devoted to bringing hope back to those who have lost loved ones.

Chris Dennon, Founder of Michael's Place

